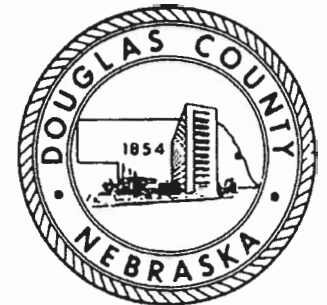


VII.A.3. ...Initiate the mental health capital improvement projects... submitted by Jones Cavonough at 8:53 AM.

Long-Term Residential Mental Health Care Facility Plan

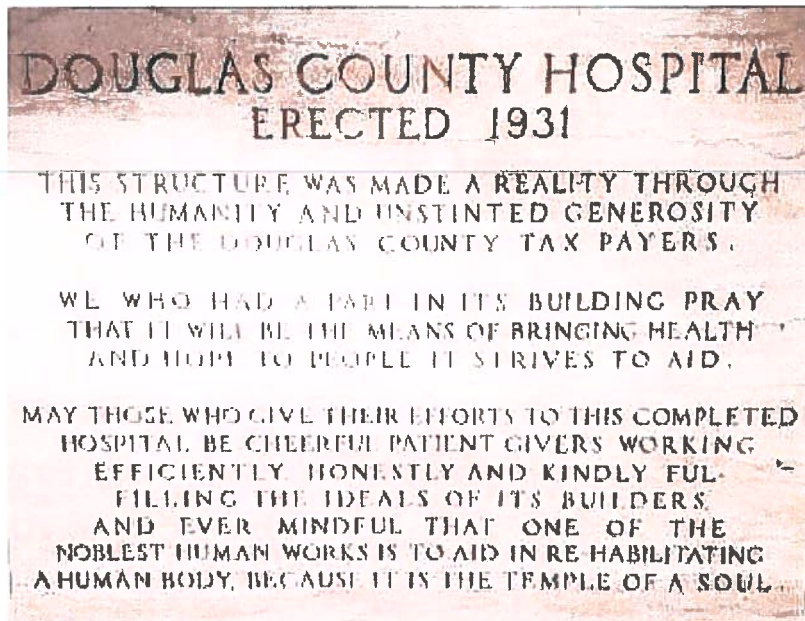


04/06/2023

DOUGLAS COUNTY HEALTH CENTER



Mission Statement



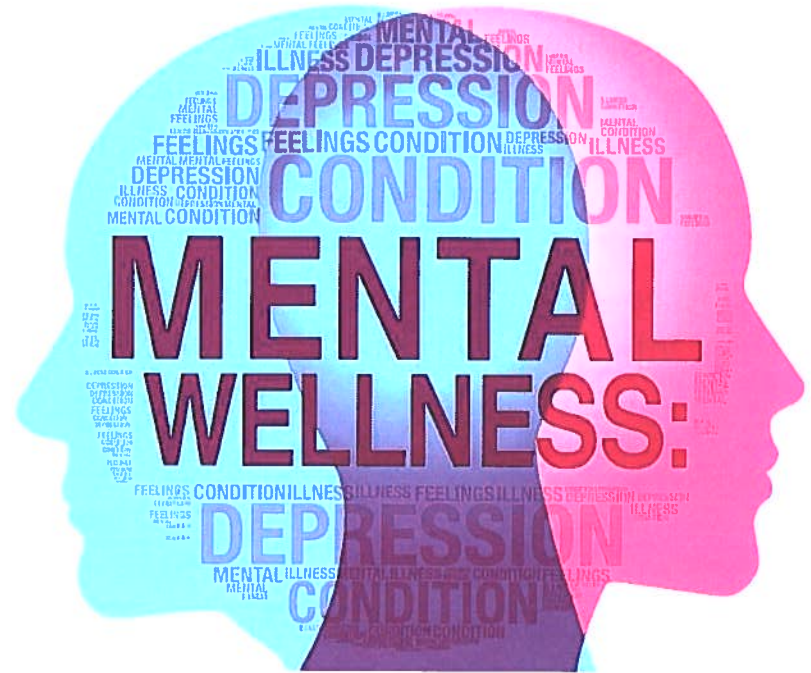
- Douglas County has provided health care for its citizens at the Douglas County Health Center on 42nd street since 1931.
- Long-term residential care is currently provided for approximately 190 physically disabled Douglas County residents.
- The Douglas County community currently lacks any long-term residential mental health care capacity



THE PROBLEM:

NO COMMUNITY LONG-TERM RESIDENTIAL MENTAL HEALTH CARE SERVICES ARE AVAILABLE

- Acute psychiatric emergency room services (e.g., UNMC) for 1 to 3 days.
- Acute intermediate in-patient psychiatric care (e.g., Immanuel Hospital and Lasting Hope) for approximately 3 to 7 days.
- **NO COMMUNITY LONG-TERM RESIDENTIAL MENTAL HEALTH CARE SERVICES ARE AVAILABLE**



THE SOLUTION



Long-Term Residential Mental Healthcare

- **Utilize existing facilities owned by Douglas County**
- **Utilize Federal ARPA Funding**
- **Provide long-term residential health care services on the 42nd Street campus, current space allows for 20 to 30 beds.**
- **Lower operational costs by expanding existing programs and community partnerships**
- **Use a collaborative public and private health care agreements with community organizations and hospital-licensed partners (e.g., UNMC and Veterans Hospital) to establish a Public Health Corridor on 42nd St.**

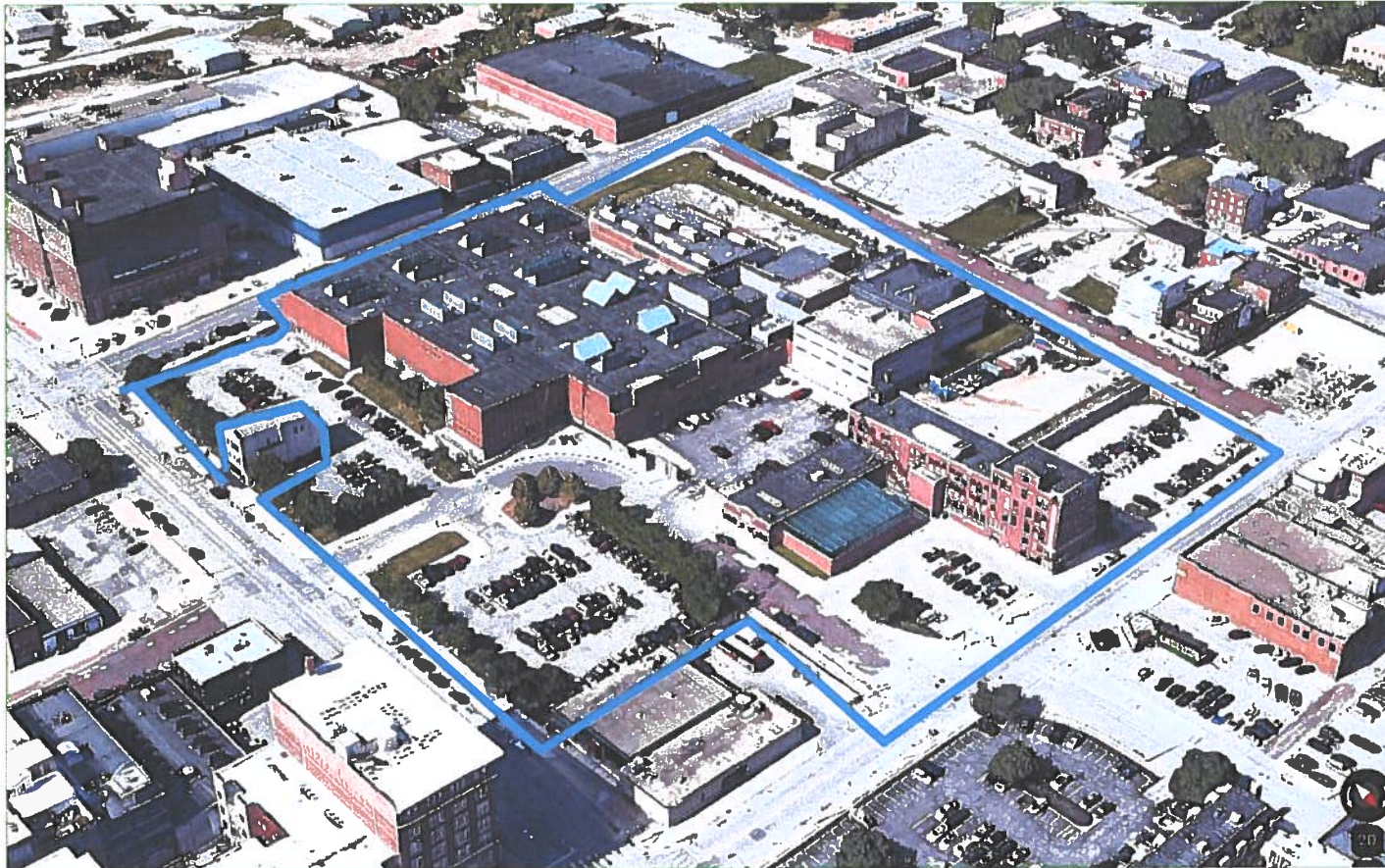
42ND STREET PUBLIC HEALTH CORRIDOR



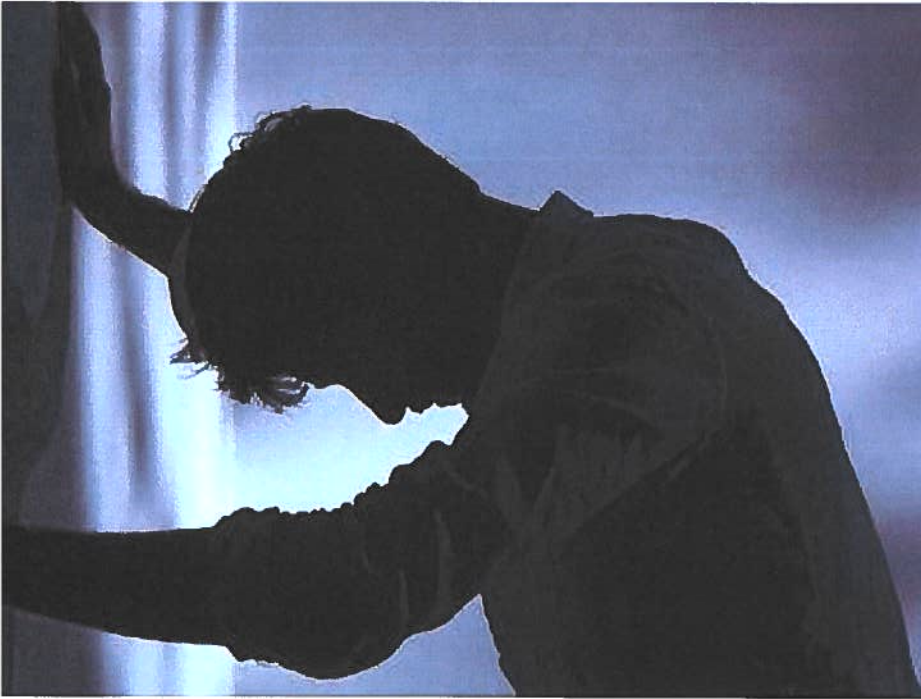
- Eliminate negative stigma of corrections center collocation venue for patients and their families
- Lower construction, staffing and operational costs
- Medicare-Medicaid reimbursement is available on the 42nd Street campus
- Service and Program Sharing with the Douglas County Health Center (including food, laundry and staff) and other existing partners
- Multiple shared spaces for program, population and administration use
- Central location creates staffing efficiencies



CORRECTIONS CAMPUS



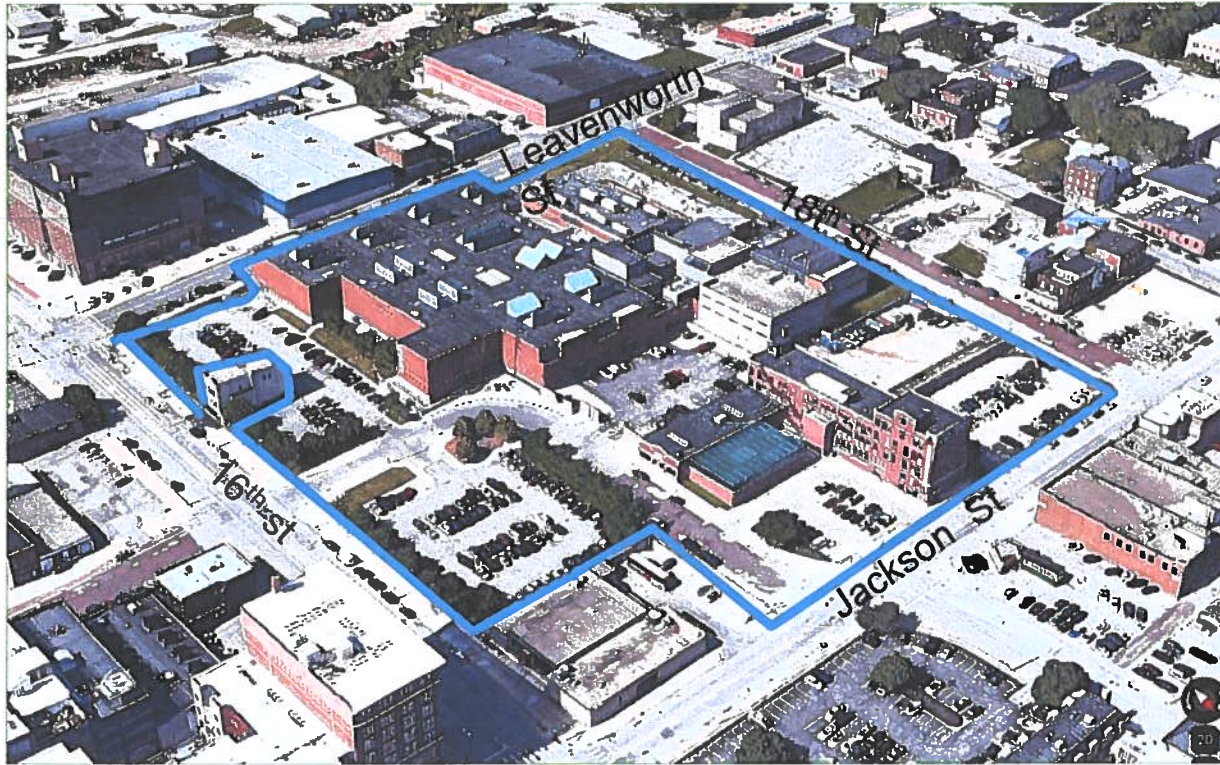
THE PROBLEM



- The Douglas County Corrections Center was not designed to safely treat mental health needs of the inmate population and detaining people is expensive
- Inmates are not Medicaid/Medicare eligible for healthcare reimbursement. Currently paid for with property tax revenue
- There are no secure spaces to hold and treat mentally ill inmates
- Approximately 40% of inmates in the correctional facility have diagnosed mental illness issues
- People cycle between detention and short-term treatment with no long-term solution or residential opportunities



THE SOLUTION

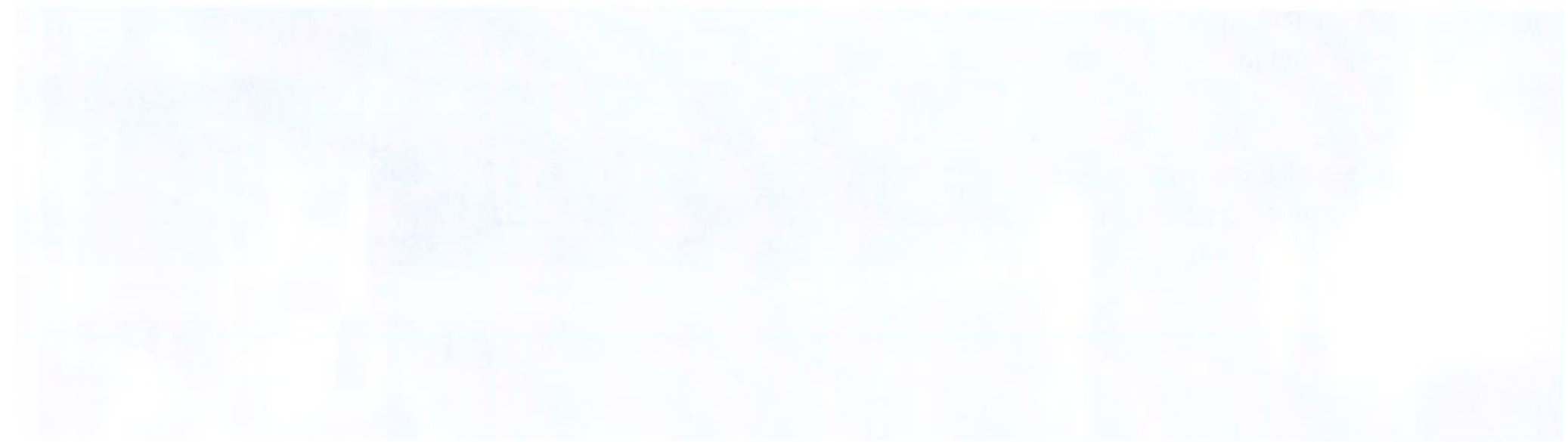


Corrections Center Campus



- Corrections has capacity. There are over 100 beds of repurposable vacant mods to serve inmate mental health and drug and alcohol rehabilitation needs
- Drug and Alcohol patients can be isolated from the general population for treatment
- Provide secure safe space for mentally ill inmate treatment isolated from the general population
- Safer and more secure for healthcare professionals and family members

BENEFITS



42ND STREET PUBLIC HEALTH CORRIDOR BENEFITS

- Create a public health corridor on 42nd street utilizing current Douglas County owned property and facilities on the 42nd Street campus in collaboration with UNMC and the VA
- Provide safe, secure long-term residential mental healthcare services for Douglas County residents
- Utilizes our public lands and maximizes resources
- Economically and environmentally more sustainable
- Uses federal ARPA funding to pay for project modernization and upgrades.



COMMUNITY COST REDUCTIONS AND TAX SAVINGS

- **Property tax relief**
- Use federal ARPA funds for the modernization and upgrade of the 42nd St. Campus.
- Use long-term mental health patients' eligibility for federal Medicaid/Medicare reimbursements for operating costs.
- Offset operational costs with a consortium of Douglas County, UNMC and VA public health care providers and private partner providers participation
- Douglas County owns adequate property and buildings.
 - No additional property acquisitions are required
 - No new buildings need to be constructed
- Cost of renovation is a fraction of the cost of new construction



TIMELINE

Land Acquisition	zero weeks – it is already owned
Committee selection	1 month
Design Team Selection	1 month
Programming	3 months
Design	9 months
Bidding	1 months
Construction	12-15 months

Total **Approximately 27-30 months total from start to occupancy**
Starting now would allow occupancy
approximately the end of October 2025



CONCLUSION



Douglas County Community Health Center campus on 42nd Street.



Douglas County Corrections Center campus on 17th street.

- Create a public health corridor on 42nd street
- Financially responsible and efficient use of resources and collaboration.
- Provide patients with a safe, secure long-term mental health care facility.
- Properties are owned by Douglas County
 - Long-term residential mental health care facility on 42nd street.
 - Safe, secure mental health care facility at Douglas County Correctional campus.
- Transportation and parking is already provided
- Local management of existing funds
- Stop downtown government sprawl
- Provide property tax savings through the use of federal funds (ARPA, Medicaid and Medicare)